

PWD

PWD

客户中心
请向我们洽询

- 使用方法 ● 技术问题
- 环境有害物质含量调查
- 特殊品 ● 价格 ● 货期

< 受理时间 平日 8:00-17:00 >

电话: **0769-22388554**

传真: **0769-23366411**

E-mail: info@pwdcn.com

www.pwdcn.com



螺杆支撑座

为您提供传动装置的专业解决方案

PROVIDE PROFESSIONAL TRANSMISSION SOLUTIONS FOR YOU.

质量第一 顾客满意 持续改进 追求卓越

QUALITY FIRST CUSTOMER SUPREME CONTINUOUS IMPROVEMENT PURSUIT OF EXCELLENCE

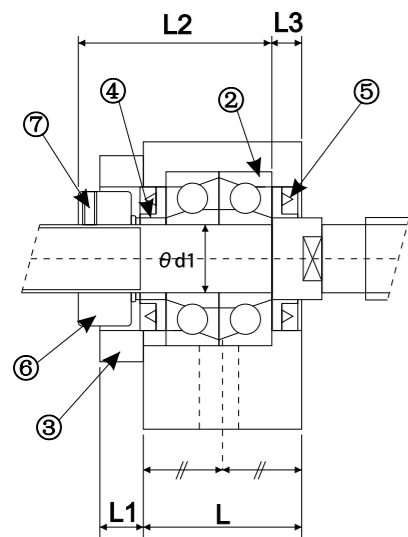
PWD

帕文迪传动装置有限公司
PAWENDI TRANSMISSION DEVICE CO., LTD

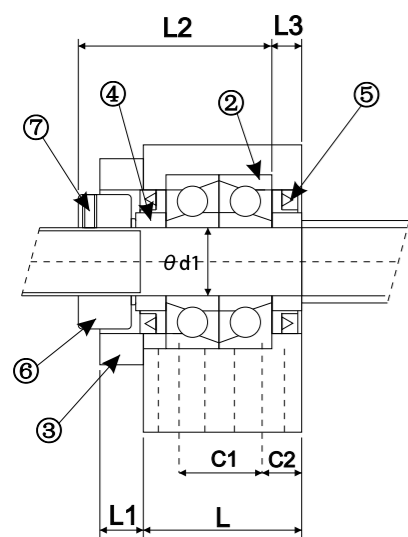
AK系列(方形固定側)

Support Unit AK
(fixed-side rectangular type)

AK

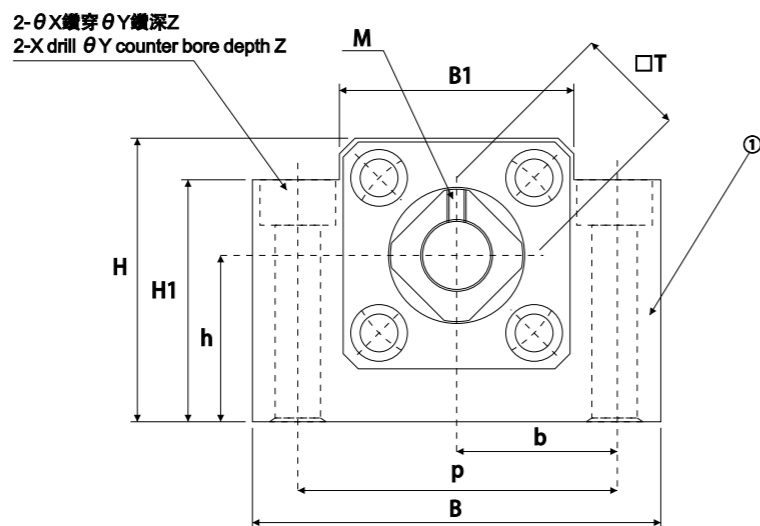


AK10~AK15



AK20

編號/ParkNo.	部品名稱/Park name	數量/Qty
1	軸承座本體/Housing	1
2	軸承/Bearing	1組/1set
3	壓板/Holding lid	1
4	套筒/Collar	2
5	油封/Seal	2
6	鎖固螺帽/Lock nut	1組/1set
7	內六角支付螺絲附銅片 Hexagon socket-head Setscrew(with set piece)	2



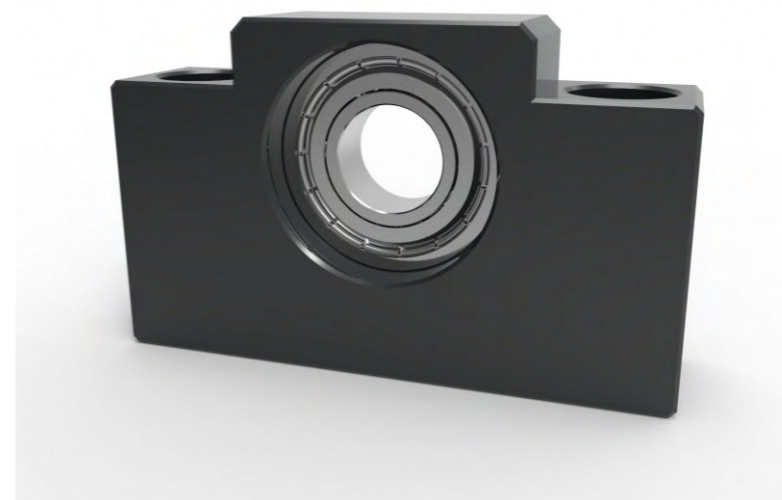
單位/Unit:mm

型號 Model No.	軸徑 shaft diameter d1	L	L1	L2	L3	B	H	b		h	B1	H1	P	X	Y	Z	M	T	c1	c2
								±0.02	±0.02											
AK10	10	24	6	31.5	6	70	43	35	25	36	35	52	9	14	11	M4	16	-	-	
AK12	12	24	6	31.5	6	70	43	35	25	36	35	52	9	14	11	M4	19	-	-	
AK15	15	25	6	36	5	80	49	40	30	41	40	60	11	17	15	M4	22	-	-	
AK20	20	42	10	50	10	95	58	47.5	30	56	45	75	11	17	15	M4	30	22	10	

接受表面特殊處理之訂製 Surface Special treatment is available

AF系列(方形支撐側)

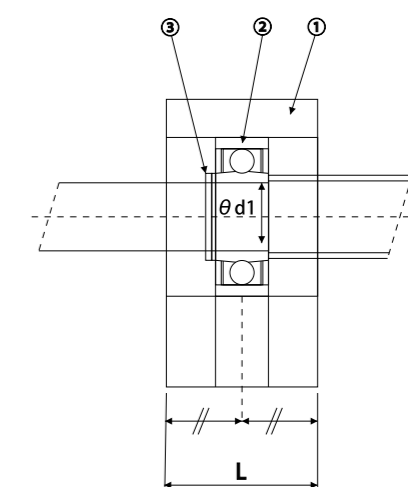
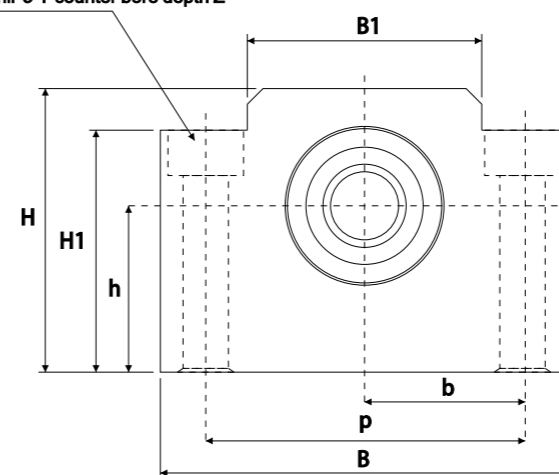
Support Unit AF
(Supported-side rectangular type)



編號/ParkNo.	部品名稱/Park name	數量/Qty
1	軸承座本體/Housing	1
2	軸承/Bearing	1組/1set
3	c型扣環/Snap ring	1

AF

2- θ X鑽穿 θ Y鑽深Z
2-X drill θ Y counter bore depth Z



單位/Unit:mm

型號 Model No.	軸徑 shaft diameter d1	L	B	H	b		h	B1	H1	P	X	Y	Z	使用軸承 Bearing	使用C型扣環 Snap ring
					±0.02	±0.02									
AF10	8	20	70	43	35	25	36	35	52	9	14	11	608ZZ	S 8	
AF12	10	20	70	43	35	25	36	35	52	9	14	11	6000ZZ	S 10	
AF15	15	20	80	49	40	30	41	40	60	9	14	11	6002ZZ	S 15	
AF20	20	26	95	58	47.5	30	56	45	75	11	17	15	6204ZZ	S 20	

接受表面特殊處理之訂製 Surface Special treatment is available

BK系列(方形固定側)

Support Unit BK
(fixed-side rectangular type)

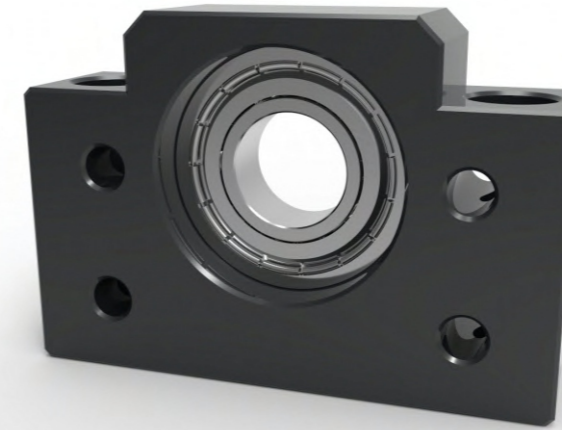
編號/ParkNo.	部品名稱/Park name	數量/Qty
1	軸承座本體/Housing	1
2	軸承/Bearing	1組/1set
3	壓板/Holding lid	1
4	套筒/Collar	2
5	油封/Seal	2
6	鎖固螺帽/Lock nut	1組/1set
7	內六角支付螺絲銅片 Hexagon socket-head Setscrew(with set piece)	2



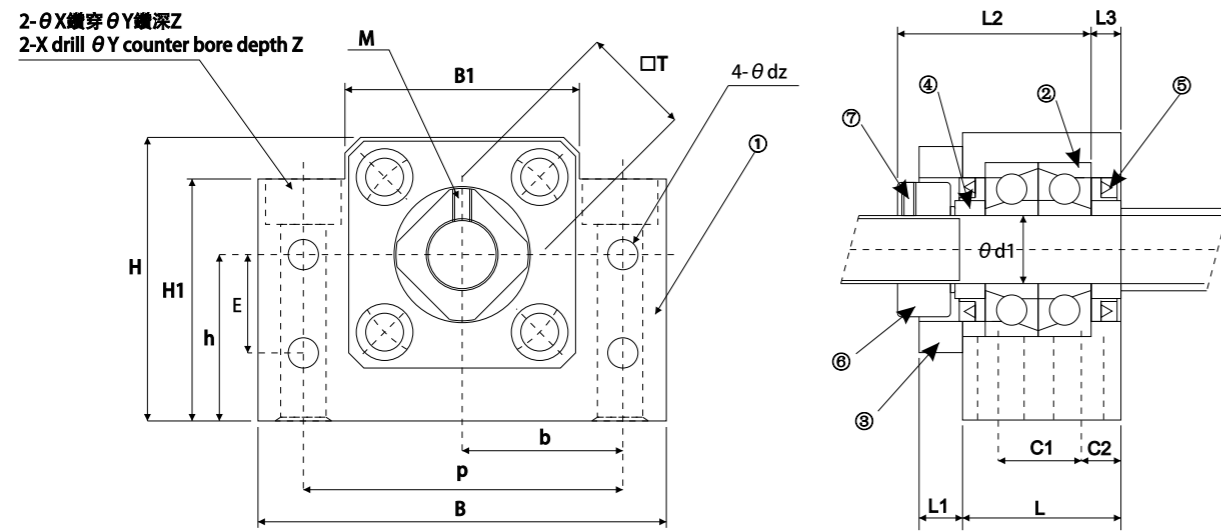
BF系列(方形支撐側)

Support Unit BF
(Supported-side rectangular type)

編號/ParkNo.	部品名稱/Park name	數量/Qty
1	軸承座本體/Housing	1
2	軸承/Bearing	1組/1set
3	c型扣環/Snap ring	1



BK

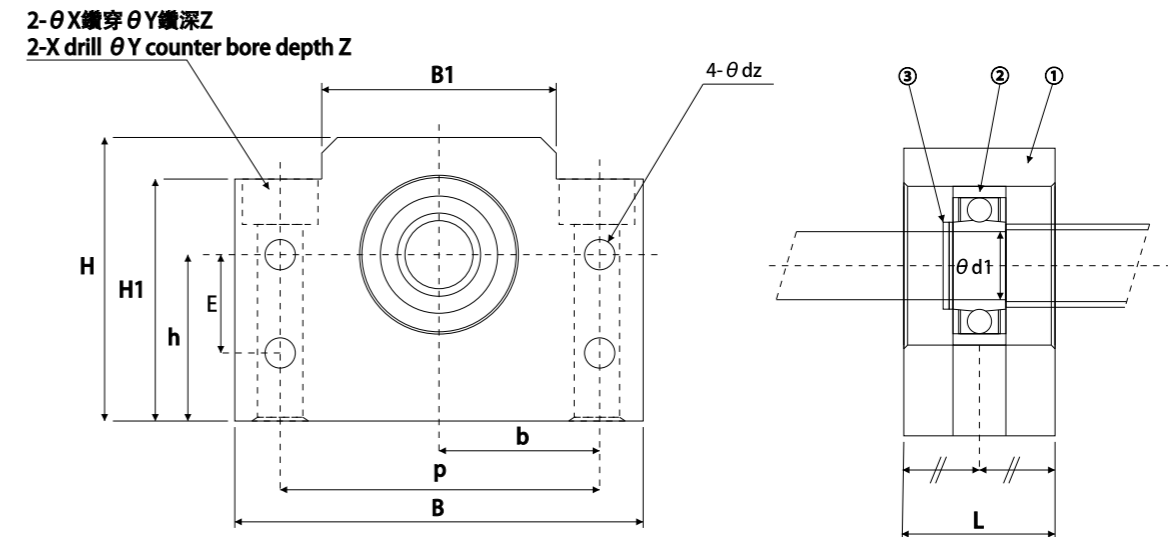


單位/Unit:mm

型號 Model No.	軸徑 shaft diameter d1	L	L1	L2	L3	B	H	b	h	B1	H1	P	C1	C2	X	Y	Z	M	T	E	dz
								±0.02	±0.02												
BK10	10	25	5	31.5	5	60	39	30	22	34	32.5	46	13	6	6.6	11	5	M4	16	15	5.5
BK12	12	25	5	31.5	5	60	43	30	25	34	32.5	46	13	6	6.6	11	1.5	M4	19	18	5.5
BK15	15	27	6	34	6	70	48	35	28	40	38	54	15	6	6.6	11	6.5	M4	22	18	5.5
BK17	17	35	9	44	7	86	64	43	39	50	55	68	19	8	9	14	8.5	M4	24	28	6.6
BK20	20	35	8	43	8	88	60	44	34	52	50	70	19	8	9	14	8.5	M4	30	22	6.6
BK25	25	42	12	54	9	106	80	53	48	64	70	85	22	10	11	17.5	11	M5	35	33	9
BK30	30	45	14	61	9	128	89	64	51	76	78	102	23	11	14	20	13	M6	40	33	11
BK35	35	50	14	67	12	140	96	70	52	88	79	114	26	12	14	20	13	M8	50	35	11
BK40	40	61	18	76	15	160	110	80	60	100	90	130	33	14	18	26	17	M8	50	37	14

接受表面特殊處理之訂製 Surface Special treatment is available

BF



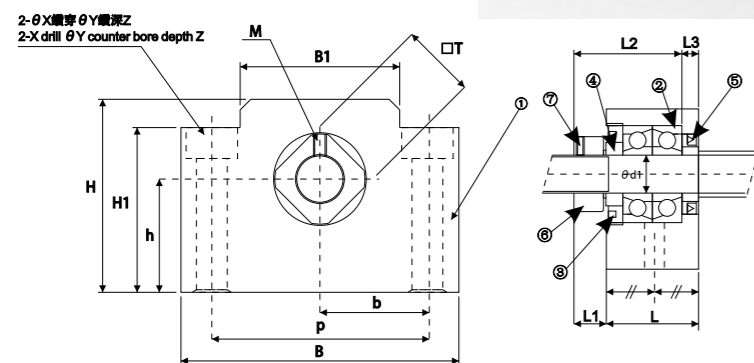
單位/Unit:mm

型號 Model No.	軸徑 shaft diameter d1	L	B	H	b	h	B1	H1	P	X	Y	Z	E	dz	使用軸承 Bearing	使用C型扣環 Snap ring
					±0.02	±0.02										
BF10	8	20	60	39	30	22	34	32.5	46	6.6	11	5	15	5.5	608ZZ	S 8
BF12	10	20	60	43	30	25	34	32.5	46	6.6	11	1.5	18	5.5	6000ZZ	S 10
BF15	15	20	70	48	35	28	40	38	54	6.6	11	6.5	18	5.5	6002ZZ	S 15
BF17	17	23	86	64	43	39	50	55	68	9	14	8.5	28	6.6	6203ZZ	S 17
BF 20	20	26	88	60	44	34	52	50	70	9	14	8.5	22	6.6	6204ZZ	S 20
BF 25	25	30	106	80	53	48	64	70	85	11	17.5	11	33	9	6205ZZ	S 25
BF 30	30	32	128	89	64	51	76	78	102	14	20	13	33	11	6206ZZ	S 30
BF 35	35	32	140	96	70	52	88	79	114	14	20	13	35	11	6207ZZ	S 35
BF 40	40	37	160	110	80	60	100	90	130	18	26	17.5	37	14	6208ZZ	S 40

接受表面特殊處理之訂製 Surface Special treatment is available

EK系列(方形固定側)

Support Unit EK
(fixed-side rectangular type)



EK

編號/ParkNo.	部品名稱/Park name	數量/Qty
1	軸承座本體/Housing	1
2	軸承/Bearing	1組/1set
3	壓板/Holding lid	1
4	套筒/Collar	2
5	油封/Seal	1(2)
6	鎖固螺帽/Lock nut	1
7	內六角支付螺絲附銅片 Hexagon socket-head Setscrew(with set piece)	2

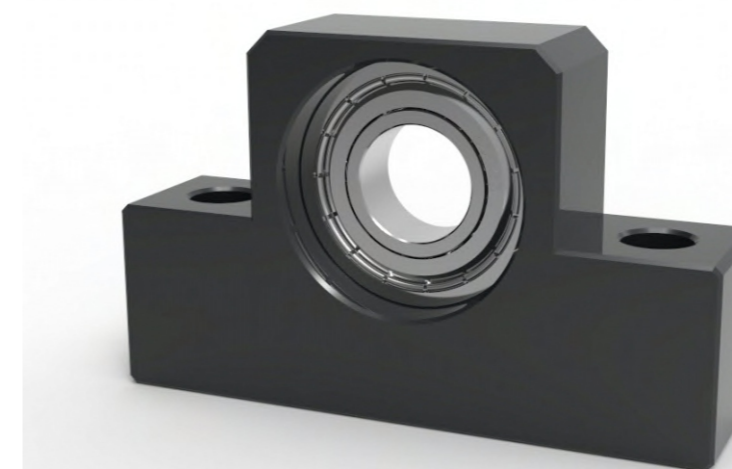
單位/Unit:mm

型號 Model No.	軸徑 shaft diameter d1	L	L1	L2	L3	B	H	b		h	B1	H1	P	X	Y	Z	M	T
								±0.02	±0.02									
E K06	6	20	5.5	22	3.5	42	25	21	13	18	20	30	5.5	9.5	11	M3	12	
E K08	8	23	7	26	4	52	32	26	17	25	26	38	6.6	11	12	M3	14	
E K10	10	24	6	31.5	6	70	43	35	25	36	24	52	9	-	-	M4	16	
E K12	12	24	6	31.5	6	70	43	35	25	36	24	52	9	-	-	M4	19	
E K15	15	25	6	36	5	80	49	40	30	41	25	60	11	-	-	M4	22	
E K20	20	42	10	50	10	95	58	47.5	30	56	25	75	11	-	-	M4	30	

接受表面特殊處理之訂製 Surface Special treatment is available

EF系列(方形支撐側)

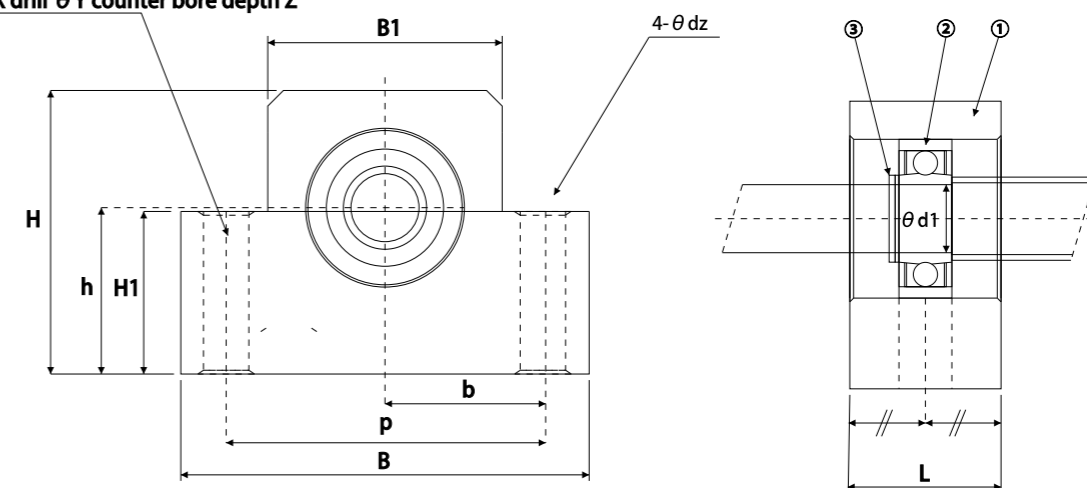
Support Unit EF
(Supported-side rectangular type)



編號/ParkNo.	部品名稱/Park name	數量/Qty
1	軸承座本體/Housing	1
2	軸承/Bearing	1組/1set
3	c型扣環/Snap ring	1

EF

2-θX鑽穿θY鑽深Z
2-X drill θY counter bore depth Z



單位/Unit:mm

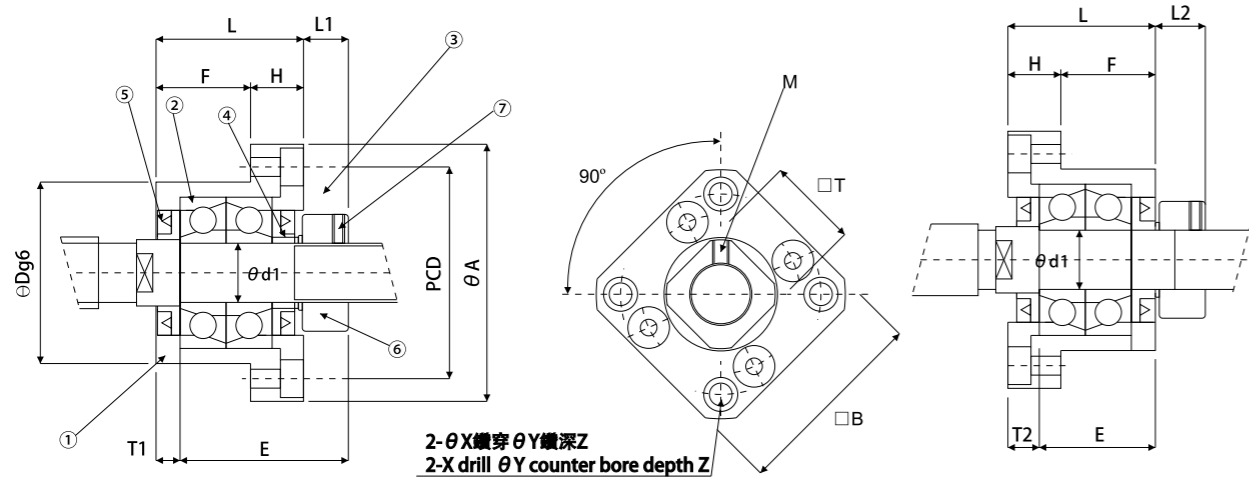
型號 Model No.	軸徑 shaft diameter d1	L	B	H	b		h	B1	H1	P	X	Y	Z	使用軸承 Bearing	使用C型扣環 Snap ring
					±0.02	±0.02									
EF06	6	12	42	25	21	13	18	20	30	5.5	9.5	11	606ZZ	S 6	
EF08	6	14	52	32	26	17	25	26	38	6.6	11	12	606ZZ	S 6	
EF10	8	20	70	43	35	25	36	24	52	9	-	-	608ZZ	S 8	
EF12	10	20	70	43	35	25	36	24	52	9	-	-	6000ZZ	S 10	
EF15	15	20	80	49	40	30	41	25	60	9	-	-	6002ZZ	S 15	
EF20	20	26	95	58	47.5	30	56	25	75	11	-	-	6204ZZ	S 20	

接受表面特殊處理之訂製 Surface Special treatment is available

FK系列 (法蘭形固定側)

Support Unit FK
(fixed-side rectangular type)

編號/ParkNo.	部品名稱/Park name	數量/Qty
1	軸承座本體/Housing	1
2	軸承/Bearing	1組/1set
3	壓板/Holding lid	1
4	套筒/Collar	2
5	油封/Seal	2
6	鎖固螺帽/Lock nut	1組/1set
7	內六角支付螺絲附銅片 Hexagon socket-head Setscrew(with set piece)	2



裝置方法A/Mounting method A

裝置方法B/Mounting method B

單位/Unit:mm

型號 Model No.	軸徑 shaft diameter d1	L	H	F	E	Dg6	裝置方法A Mounting method B		裝置方法B Mounting method B		X	Y	Z	M	T				
							L1	T1	L2	T2									
FK06	6	20	7	13	22	22	-0.007 -0.02	35	28	28	5.5	3.5	8.5	6.5	3.4	6	3	M3	12
FK08	8	23	9	14	26	28	-0.007 -0.02	43	35	35	7	4	10	7	3.4	6	4	M3	14
FK10	10	27	10	17	29.5	34	-0.009 -0.025	52	42	42	7.5	5	8.5	6	4.5	8	4	M4	16
FK12	12	27	10	17	29.5	36	-0.009 -0.025	54	44	44	7.5	5	8.5	6	4.5	8	4	M4	19
FK15	15	32	15	17	36	40	-0.009 -0.025	63	50	52	10	6	12	8	5.5	9.5	6	M4	22
FK17	17	45	22	23	47	50	-0.009 -0.025	77	62	61	11	9	14	12	6.6	11	10	M4	24
FK20	20	52	22	30	50	57	-0.010 -0.029	85	70	68	8	10	12	14	6.6	11	10	M4	30
FK25	25	57	27	30	60	63	-0.010 -0.029	98	80	79	13	10	20	17	9	14	13	M5	35
FK30	30	62	30	32	61	75	-0.010 -0.029	117	95	93	11	12	17	18	11	17	15	M6	40

接受表面特殊處理之訂製 Surface Special treatment is available

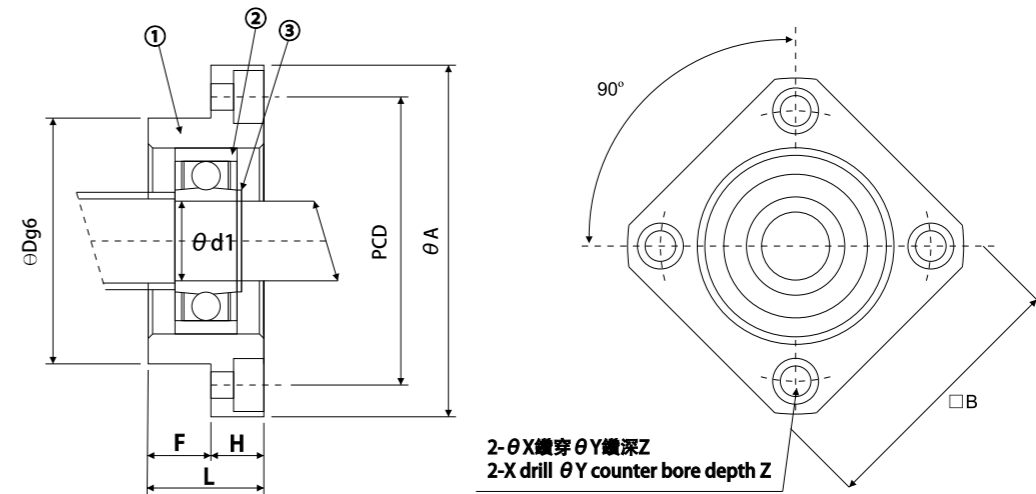
FF系列 (方形支撐側)

Support Unit FF
(Supported-side rectangular type)

編號/ParkNo.	部品名稱/Park name	數量/Qty
1	軸承座本體/Housing	1
2	軸承/Bearing	1組/1set
3	C型扣環/Snap ring	1



FF



單位/Unit:mm

型號 Model No.	軸徑 shaft diameter d1	L	H	F	Dg6	A	PCD	B	X	Y	Z	使用軸承 Bearing	使用C型扣環 Snap ring	
FF06	6	10	6	4	22	-0.007 -0.02	36	28	28	3.4	6	4	606ZZ	S 6
FF10	8	12	7	5	28	-0.007 -0.02	43	35	35	3.4	6	4	608ZZ	S 8
FF12	10	15	7	8	34	-0.009 -0.025	52	42	42	4.5	8	4	6000ZZ	S 10
FF15	15	17	9	8	40	-0.009 -0.025	63	50	52	5.5	9.5	5.5	6002ZZ	S 15
FF17	17	20	11	9	50	-0.009 -0.025	77	62	61	6.6	11	6.5	6203ZZ	S 17
FF20	20	20	11	9	57	-0.010 -0.029	85	70	68	6.6	11	6.5	6204ZZ	S 20
FF25	25	24	14	10	63	-0.010 -0.029	98	80	79	9	14	8.5	6205ZZ	S 25
FF30	30	27	18	9	75	-0.010 -0.029	117	95	93	11	17.5	11	6206ZZ	S 30

接受表面特殊處理之訂製 Surface Special treatment is available

AKE系列(經濟方形固定側)

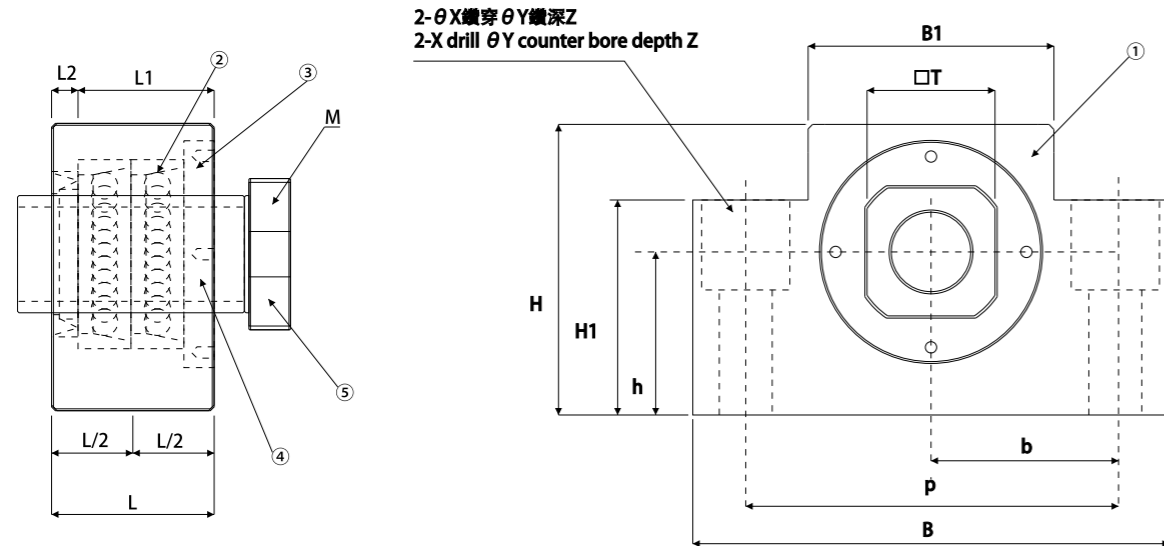
Support Unit AKE
(fixed-side rectangular type)



編號/ParkNo.	部品名稱/Park name	數量/Qty
1	軸承座本體/Housing	1
2	徑向配對軸承/Bearing	1組/1set
3	螺栓壓板/Screw Holding lid	1
4	套筒/Collar	2
5	油封/Seal	1
6	鎖固螺帽/Lock nut	1組/1set
7	內六角支付螺絲附銅片 Hexagon socket-head Setscrew(with set piece)	1

AKE

- ※ ①②③⑤是一體的,請勿將其分解
①②③⑤ as a whole, do not take them apart
- ※ 已施加過預壓,使其能承受推力何種
請在旋轉數Max3000rpm以內使用
Max.3,000r.p.m with preload bearings.



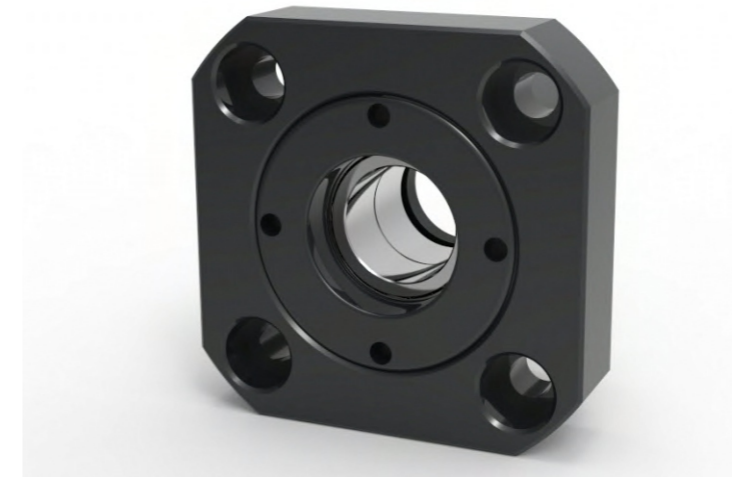
單位/Unit:mm

型號 Model No.	軸徑 shaft diameter d1	L	L1	L2	H	B1	H1			P	X	Y	Z	M (細螺紋)	T
								± 0.02	± 0.02						
AKE 10	10	27	31.5	6	43	36	35	70	25	52	9	14	11	M10*1.0	16
AKE 12	12	27	31.5	6	43	36	35	70	25	52	9	14	11	M12*1.0	19
AKE 15	15	29	36	5	49	41	40	80	30	60	11	17	15	M15*1.0	22

接受表面特殊處理之訂製 Surface Special treatment is available

FKE系列(經濟法蘭型固定側)

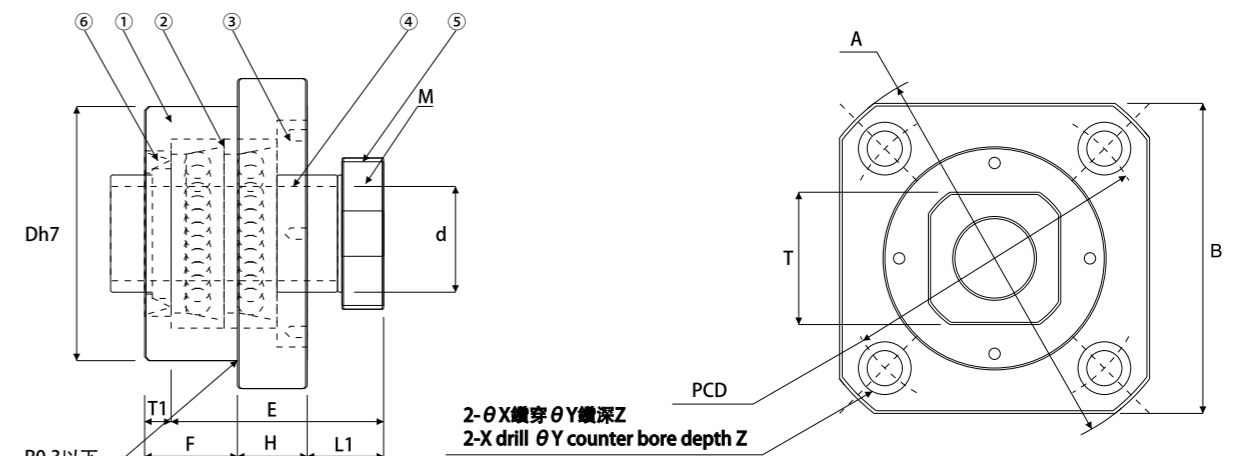
Support Unit FKE
(fixed-side rectangular economy type)



編號/ParkNo.	部品名稱/Park name	數量/Qty
1	軸承座本體/Housing	1
2	徑向配對軸承/Bearing	1組/1set
3	螺栓壓板/Screw Holding lid	1
4	套筒/Collar	2
5	油封/Seal	1
6	鎖固螺帽/Lock nut	1組/1set
7	內六角支付螺絲附銅片 Hexagon socket-head Setscrew(with set piece)	1

FKE

- ※ ①②③⑤是一體的,請勿將其分解
①②③⑤ as a whole, do not take them apart
- ※ 已施加過預壓,使其能承受推力何種
請在旋轉數Max3000rpm以內使用
Max.3,000r.p.m with preload bearings.



單位/Unit:mm

型號 Model No.	軸徑 shaft diameter d1	L	H	F	E	Dh7	A	PCD	B	L1	T1	X	Y	Z	M (細螺紋)	T
FKE 05	5	16.5	6	10.5	18.5	20	34	26	26	5.5	3.5	3.4	6	3	M5*0.5	11
FKE 06	6	20	7	13	22	22	36	28	28	5.5	3.5	3.4	6	3.5	M6*0.75	12
FKE 08	8	23	9	14	26	28	43	35	35	7	4	3.4	6	4	M8*1.0	14
FKE 10	10	26	10	16	29.5	34	52	42	42	7.5	5	4.5	8	4	M10*1.0	16
FKE 12	12	26	10	16	29.5	36	54	44	44	7.5	5	4.5	8	4	M12*1.0	19
FKE 15	15	30	13	17	36	40	63	50	52	10	6	5.5	9.5	6	M15*1.0	22

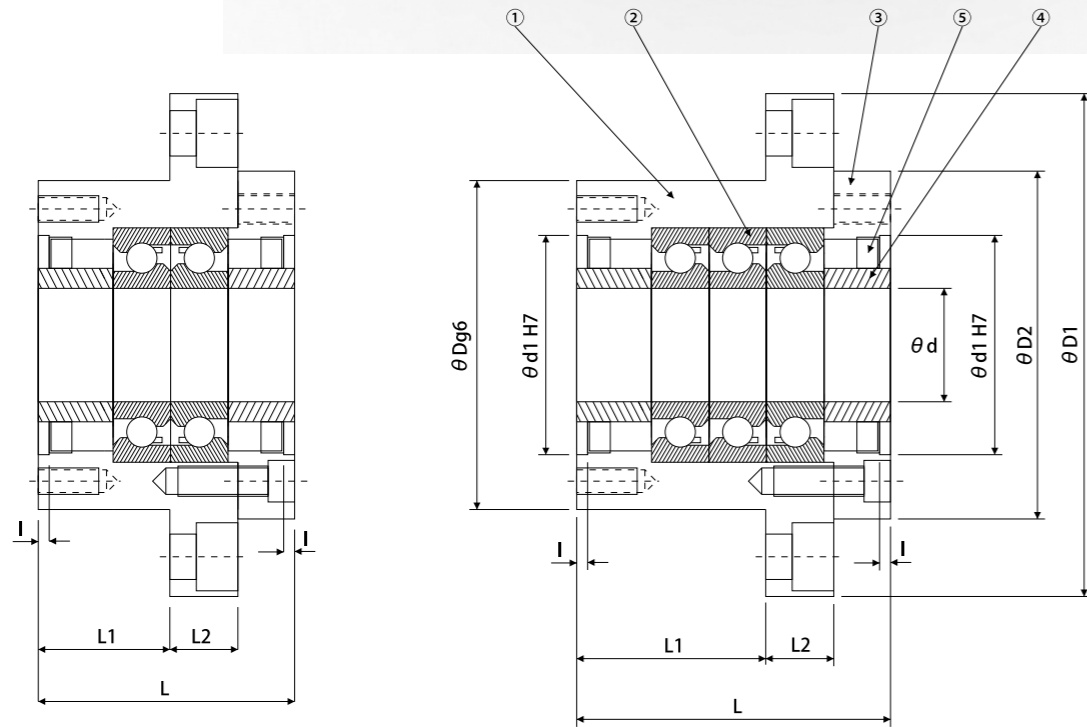
接受表面特殊處理之訂製 Surface Special treatment is available

WBK-DF/DFD型高荷重支撐座
WBK-DF/DFD type support Unit
(heavy-load)

編號/Part No.	部品名稱/Part name	數量/Qty
1	軸承座本體/Housing	1
2	軸承/Bearing	1組/1set
3	壓板/Holding lid	1
4	套筒/Collar	2
5	油封/Seal	2



WBK-DF/DFD



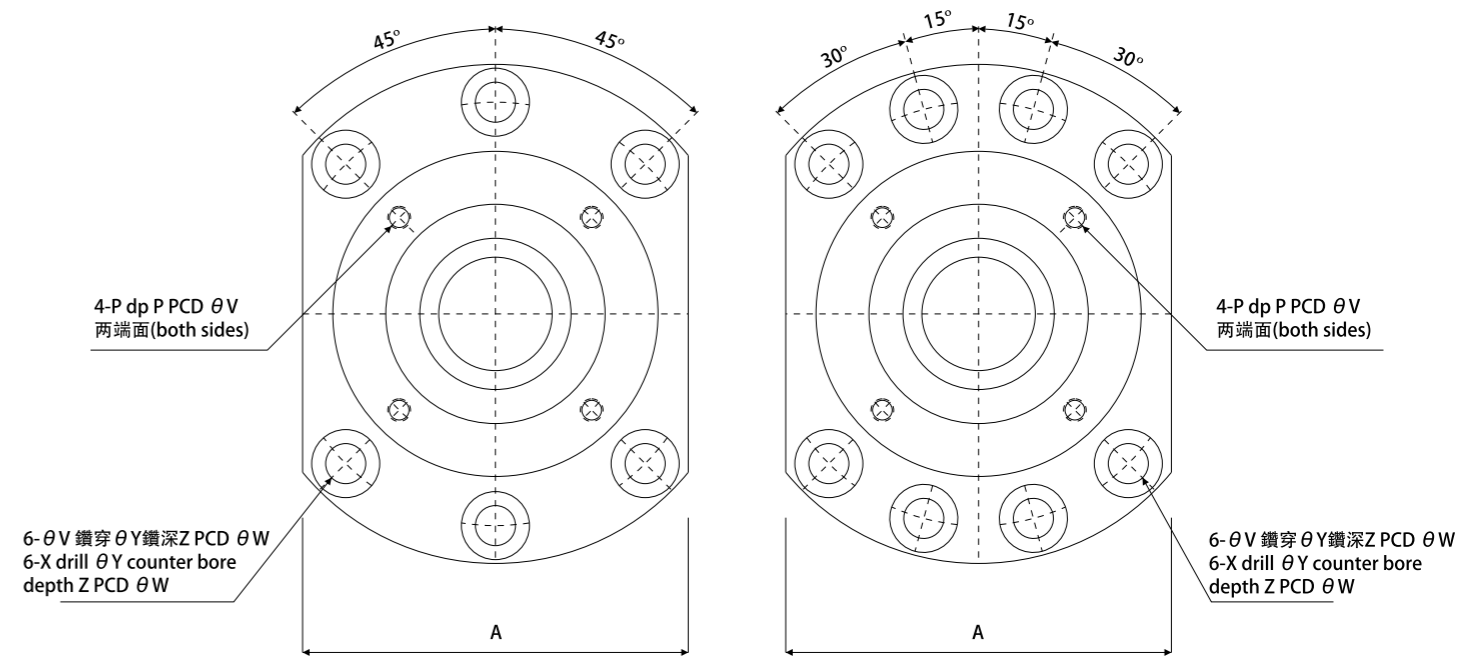
DF 組合

DFD組合

單位/Unit:mm

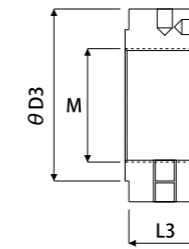
型號 Model No.	d	D	D1	D2	L	L1	L2	A	W	X	Y	Z	d1	I	V	P	Q
WB K 20DF	20	70	106	72	60	32	15	80	88	9	14	8.5	45	3	58	M5	10
WB K 25DF	25	85	130	90	66	33	18	100	110	11	17.5	11	57	4	70	M6	12
WB K 25DFD	25	85	130	90	81	48	18	100	110	11	17.5	11	57	4	70	M6	12
WB K 30DF	30	85	130	90	66	33	18	100	110	11	17.5	11	57	4	70	M6	12
WB K 30DFD	30	85	130	90	81	48	18	100	110	11	17.5	11	57	4	70	M6	12
WB K 35DF	35	95	142	102	66	33	18	106	121	11	17.5	11	69	4	80	M6	12
WB K 35DFD	35	95	142	102	81	48	18	106	121	11	17.5	11	69	4	80	M6	12
WB K 40DF	40	95	142	102	66	33	18	106	121	11	17.5	11	68	4	80	M6	12
WB K 40DFD	40	95	142	102	81	48	18	106	121	11	17.5	11	68	4	80	M6	12

接受表面特殊處理之訂製 Surface Special treatment is available

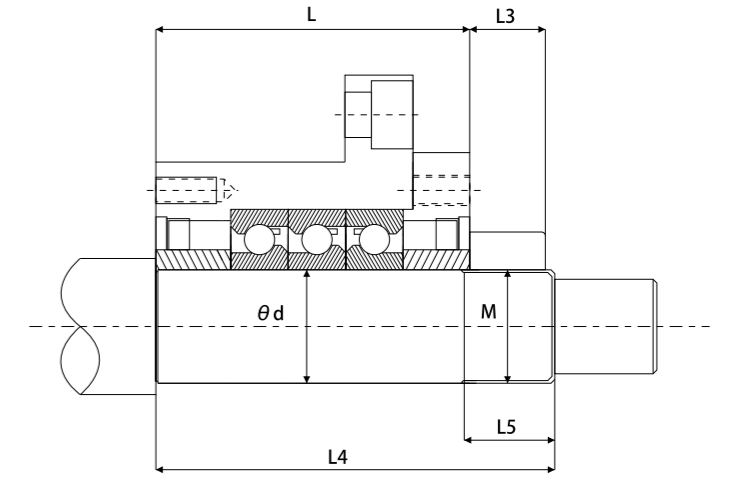


軸徑 $\theta d \le 30$
Shaft diameter $\theta d \le 30$

軸徑 $\theta d \le 35$
Shaft diameter $\theta d \le 35$



鎖固螺帽
Lock nut



軸端尺寸
Dimensions of shaft end

單位/Unit:mm

型號 Model No.	基本動定格荷重 Basic dynamic load rating Calc(kgf)	界限荷重 permissible axial load (N)	預壓荷重 Preload (N)	軸方向剛性 Axial rigidity (N/um)	起動力矩 starting torque (N-cm)	鎖固螺帽 lock nut			重量 Weight Kgs	軸端尺寸 Dimensions of shaft end		
						M	D3	L3		d	L4	L5
WB K 20DF	21900	26600	2150	750	14.0	M20*1	40	18	1.9	20	81	23
WB K 25DF	28500	40500	3150	1000	23.0	M25*1.5	45	20	3.1	25	89	26
WB K 25DFD	46500	81500	4300	1470	31.0	M25*1.5	45	20	3.4	25	104	26
WB K 30DF	29200	43000	3350	1030	24.0	M30*1.5	50	20	3.0	30	89	26
WB K 30DFD	47500	86000	4500	1520	33.0	M30*1.5	50	20	3.3	30	104	26
WB K 35DF	31000	50000	3800	1180	28.0	M35*1.5	55	22	3.4	35	92	30
WB K 35DFD	50500	100000	5200	1710	37.0	M35*1.5	55	22	4.3	35	107	30
WB K 40DF	31500	52000	3900	1230	28.0	M40*1.5	60	22	3.6	40	92	30
WB K 40DFD	51500	104000	5300	1810	38.0	M40*1.5	60	22	4.2	40	107	30

接受表面特殊處理之訂製 Surface Special treatment is available

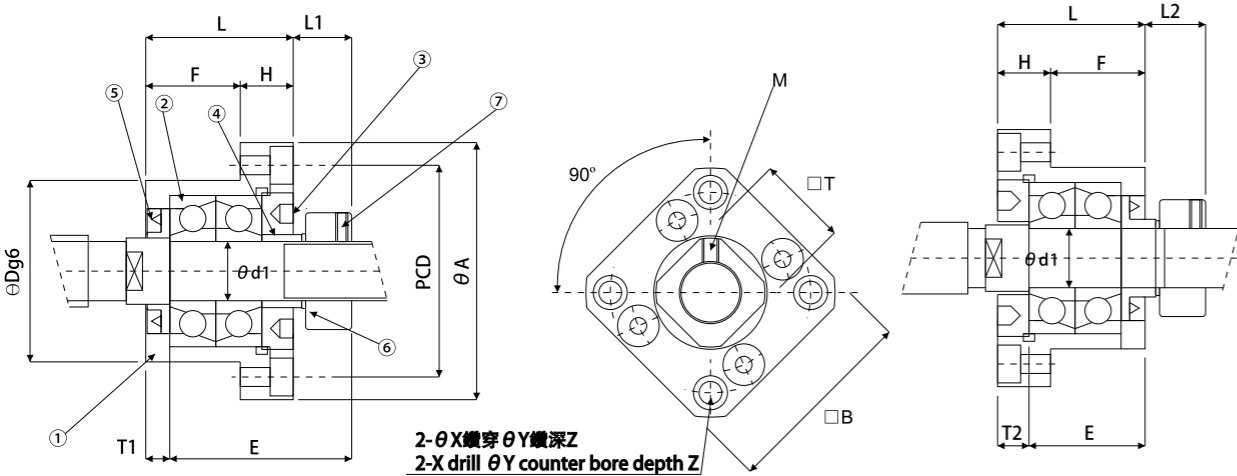
FK系列 (法蘭形固定側)

Support Unit FK
(fixed-side rectangular type)

編號/Part No.	部品名稱/Part name	數量/Qty
1	軸承座本體/Housing	1
2	軸承/Bearing	1組/1set
3	壓板/Holding lid	1
4	套筒/Collar	2
5	油封/Seal	2
6	鎖固螺帽/Lock nut	1組/1set
7	內六角支付螺絲銅片 Hexagon socket-head Setscrew(with set piece)	2



FK05~FK08



裝置方法A/Mounting method A

裝置方法B/Mounting method B

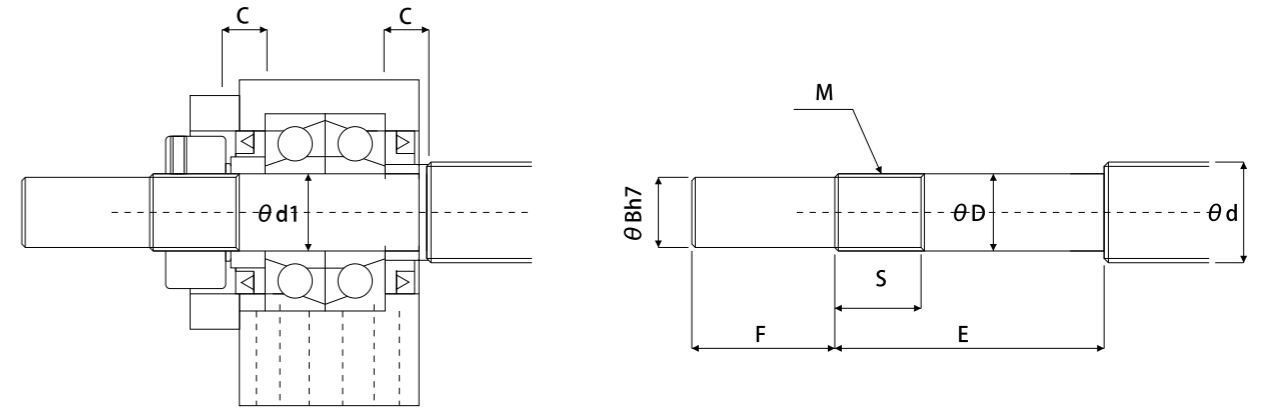
單位/Unit:mm

型號 Model No.	軸徑 shaft diameter d1	L	H	F	E	Dg6	A	PCD	B	裝置方法A Mounting method A		裝置方法B Mounting method B		X	Y	Z	M	T	
										L1	T1	L2	T2						
FK05	5	16.5	6	10.5	18.5	20	-0.007 -0.02	34	26	26	5.5	3.5	7	5	3.4	6.5	3	M2.6	11
FK06	6	20	7	13	22	22	-0.007 -0.02	35	28	28	5.5	3.5	8.5	6.5	3.4	6	3	M3	12
FK08	8	23	9	14	26	28	-0.007 -0.02	43	35	35	7	4	10	7	3.4	6	4	M3	14

接受表面特殊處理之訂製 Surface Special treatment is available

建議軸端加工尺寸 (固定側) BK型

Recommended end shape (Fixed-side)
for Support Units types



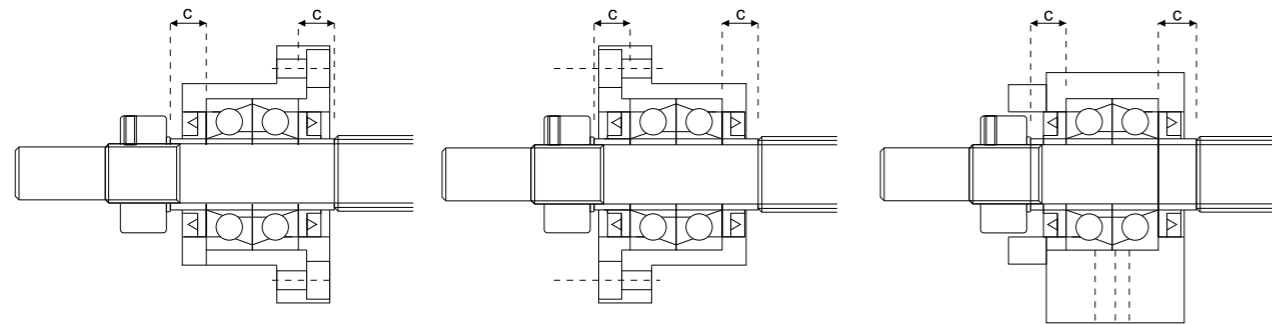
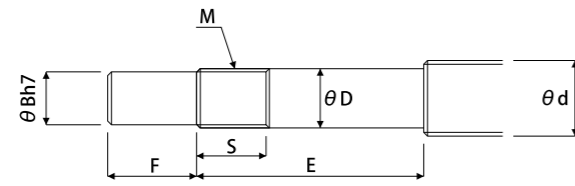
BK 型
Type BK

單位/Unit:mm

型號 Support unit model No.	滾珠螺桿軸外徑 Ballscrew shaft OD	軸端部外徑 Shaft support portion OD	公稱螺紋 Metric screw thread			套筒長度 Metric screw thread			
			M	S	C				
BK 型 Type BK	d	D	B	E	F				
BK 10	12/14/15	10	-0.005 -0.012	8	36	15	M10	16	5.5
BK 12	14/15/16	12	-0.005 -0.012	10	36	15	M12	14	5.5
BK 15	18/20	15	-0.005 -0.012	12	40	20	M15	12	6
BK 17	20/25	17	-0.005 -0.014	15	53	23	M17	17	7
BK 20	25/28	20	-0.005 -0.014	17	53	25	M20	15	8
BK 25	32/36	25	-0.005 -0.014	20	65	30	M25	18	9
BK 30	36/40	30	-0.005 -0.015	25	72	38	M30	25	9
BK 35	45	35	-0.005 -0.015	30	81	45	M35	28	12
BK 40	50	40	-0.005 -0.015	35	93	50	M40	35	15

建議軸端加工尺寸(固定側)FK, EK, AK型

Recommended shaft end shape (Fixed-side)
for Support Units types FK,EK,AK



FK 型
Type FK

FK 型
Type FK

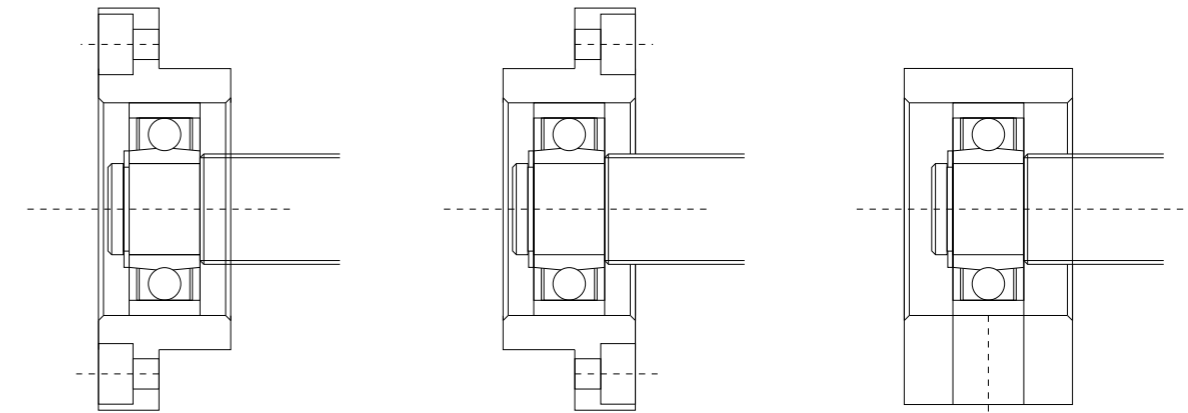
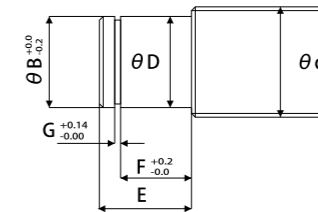
EK,AK 型
Type EK,AK

單位/Unit:mm

型號 Support unit model No.					滾珠螺桿軸外徑 Ball screw shaft OD	軸端部外徑 Shaft support portion OD			公稱螺紋 Metric screw thread		套筒長度 Metric screw thread		
FK 型 Type FK	FKE 型 Type FKE	EK 型 Type EK	AK 型 Type AK	AKE 型 Type AKE	d	D	B	E	F	M	S	C	
FK 05	FKE 05	EK 05	-	-	8	5	-0.005 -0.012	4	25	6	M5*0.5	7	3.5
FK -06	FKE 06	EK 06	-	-	10	6	-0.005 -0.012	4	28	8	M6*0.75	8	5
FK 08	FKE 08	EK 08	-	-	10/12	8	-0.005 -0.012	6	32	9	M8*1	10	5.5
FK 10	FKE 10	EK 10	AK 10	AKE 10	12/14/15	10	-0.005 -0.012	8	36	15	M10*1	11	5.5
FK 12	FKE 12	EK 12	AK 12	AKE 12	14/15/16	12	-0.005 -0.014	10	36	15	M12*1	11	5.5
FK 15	FKE 15	EK 15	AK 15	AKE 15	18/20	15	-0.005 -0.014	12	47	20	M15*1	13	10
FK 17	-	-	-	-	20/25	17	-0.005 -0.014	15	58	23	M17*1	15	10
FK 20	-	EK 20	AK 20	-	25/28/30	20	-0.005 -0.014	17	62	25	M20*1	17	11
FK 25	-	-	-	-	30/32/36	25	-0.005 -0.014	20	76	30	M25*1.5	20	15
FK 30	-	-	-	-	36/40	30	-0.005 -0.015	25	72	38		25	9

建議軸端加工尺寸(固定側)FF, EF, BF, AF型

Recommended shaft end shape (Fixed-side)
for Support Units types FF,EF,BF,AF



FF 型
Type FF

FF 型
Type FF

EF,AF,BF 型
Type EF,AF,BF

單位/Unit:mm

型號 Support unit model No.				滾珠螺桿軸外徑 Ball screw shaft OD	軸端部外徑 Shaft support portion OD			套筒長度 Metric screw thread		
FF 型 Type FF	EF 型 Type EF	BF 型 Type BF	AF 型 Type AF	d	D	B	E	F	G	
FF 06	EF 06	-	-	8	6	-0.005 -0.012	5.7	9	6.8	0.8
-	EF 08	-	-	10	6	-0.005 -0.012	5.7	9	6.8	0.8
FF 10	EF 10	BF 10	AF 10	12/14/15	8	-0.005 -0.012	7.6	10	7.9	0.9
FF 12	EF 12	BF 12	AF 12	14/15/16	10	-0.005 -0.012	9.6	11	9.15	1.15
FF 15	EF 15	BF 15	AF 15	18/20	15	-0.005 -0.014	14.3	13	10.15	1.15
FF 17	-	BF 17	-	20/25	17	-0.005 -0.014	16.2	16	13.15	1.15
FF 20	EF 20	BF 20	AF 20	25/28/30	20	-0.005 -0.014	19	19(16)	15.35 (13.35)	1.35
FF 25	-	BF 25	-	30/32/36	25	-0.005 -0.014	23.9	20	16.35	1.35
FF 30	-	BF 30	-	36/40	30	-0.005 -0.015	28.6	21	17.75	1.75
-	-	BF 35	-	40/45	35	-0.005 -0.015	33	22	18.75	1.75
-	-	BF 40	-	50	40	-0.005 -0.015	38	23	19.75	1.95

支撐座固定端軸向負荷參考表

Reference of Axial load of fixed-side type support units

支撐座型號 Model No.		軸承 Bearing	靜負荷 Static load (Kgf)	軸向負荷 Attowable Axial load(Kgf)	極限轉速 Lirriting Rpm (RPM)
FK 06	EK 06	706C	93	74	
FK 08	EK 08	708A	129	103	
BK 10	AK 10	7000A	239	195	27105
FK 10	EK 10				
BK 12	AK 12	7001A	276	217	24375
FK 12	EK 12				
BK 15	AK 15	7002A	321	240	20800
FK 15	EK 15				
BK 17	FK 17	7203A	556	413	17160
		7203B	523	490	11798
BK 20		7004A	622	428	15730
	AK 20	7204A	770	587	14560
FK 20	EK 20	7204B	710	691	10625
BK 25	AK 25	7205A	964	709	12675
FK 25		7205B	881	820	8980
BK 30	FK 30	7206A	1388	939	10660
		7206B	1268	1082	7570
BK 35		7207B	1714	1466	6400
BK 40		7208B	2145	1834	5700

鎖固螺帽型號參考表

Reference of Lock nut type

編號 Order Coding	型號 Model No.	表面處理 Surface treatment	鎖緊扭矩 MAX Torgue (kgf-cm)	放鬆扭矩 Setscrew MAX Torgue(kgf-cm)
RN 06	M6*P0.75	染黑 Black Oxide	25	6(M3)
RN 06		化學鍍 Electroless Nickel Plating		
RN 08	M8*P1.0	染黑 Black Oxide	50	6(M3)
RN 08		化學鍍 Electroless Nickel Plating		
RN 10	M10*P1.0	染黑 Black Oxide	95	6(M4)
RN 10		化學鍍 Electroless Nickel Plating		
RN 12	M12*P1.0	染黑 Black Oxide	140	15(M4)
RN 12		化學鍍 Electroless Nickel Plating		
RN 15	M15*P1.0	染黑 Black Oxide	240	15(M4)
RN 15		化學鍍 Electroless Nickel Plating		
RN 17	M17*P1.0	染黑 Black Oxide	315	15(M4)
RN 17		化學鍍 Electroless Nickel Plating		
RN 20	M20*P1.0	染黑 Black Oxide	480	15(M4)
RN 20		化學鍍 Electroless Nickel Plating		
RN 25	M25*P1.5	染黑 Black Oxide	860	50(M6)
RN 25		化學鍍 Electroless Nickel Plating		
RN 30	M30*P1.5	染黑 Black Oxide	1280	50(M6)
RN 30		化學鍍 Electroless Nickel Plating		
RN 40	M40*P1.5	染黑 Black Oxide	3000	50(M6)
RN 40		化學鍍 Electroless Nickel Plating		

支撐座各廠牌型號對照表

Ballscrew support unit equivalent interchangeable for major manufacturer

PWD & THK	PWD & THK	KURODA	NSK
BK 10	EK 5	—	—
BK 12	EK 6	BSW 6	WBK 06-01A
BK 15	EK 8	BSW 8	WBK 08-01A
BK 17	EK 10	BSW 10	—
BK 20	EK 12	BSW 12	—
BK 25	EK 15	BSW 15	—
BK 30	EK 20	BSW 20	—
BK 35			
BK 40			

BF 10	EF 10	BUN 10	—
BF 12	EF 12	BUN 12	—
BF 15	EF 15	BUN 15	—
BF 17	EF 20	BUN 20	—
BF 20			
BF 25			
BF 30			
BF 35			
BF 40			

PWD	KURODA	NSK
AK 10	BSW 10	WBK 10-01A
AK 12	BSW 12	WBK 12-01A
AK 15	BSW 15	WBK 15-01A
AK 17	—	WBK 17-01A
AK 20	BSW 20	WBK 20-01A
AK 25	BSW 25	WBK 25-01A

AF 10	—	WBK 10S-01
AF 12	—	WBK 12S-01
AF 15	—	WBK 15S-01
AF 17	—	WBK 17S-01
AF 20	—	WBK 20S-01
—	—	WBK 25S-01

PWD & THK	KURODA	NSK
FK 5	—	—
FK 6	—	WBK 06-11
FK 8	BRW 8	WBK 08-11
FK 10	BRW 10	WBK 10-11
FK 12	BRW 12	WBK 12-11
FK 15	BRW 15	WBK 15-11
FK 17	—	—
FK 20	BRW 20	WBK 20-11
FK 25	BRW 25	WBK 25-11
FK 30	—	—

FF 06	BUR -6	—
FF 10	BUR -10	—
FF 12	BUR -12	—
FF 15	BUR -15	—
FF 17	—	—
FF 20	BUR -20	—
FF 25	BUR -25	—
FF 30	BUR -30	—

N-TYPE 表面處理 無點解鍍 (防鏽處理)

小型機器輕荷重用 For compact ball screw

AK 系列 (方形固定側) Support Unit AK		
AF 系列 (方形支撐側) Support Unit AF		
BK 系列 (方形固定側) Support Unit BK		
BF 系列 (方形支撐側) Support Unit BF		
EK 系列 (凸形固定側) Support Unit EK		
EF 系列 (凸形支撐側) Support Unit EF		

小型機器輕荷重用 For compact ball screw

FK 系列 (法蘭固定側) Support Unit FK		
FF 系列 (法蘭支撐側) Support Unit FF		
AKE 系列 (經濟方形固定側) Support Unit AKE		
FKE 系列 (經濟法蘭固定側) Support Unit FKE		
WBK-DF/DFD 型 (高荷重支撐座) WBK-DF/DFD type Support Unit		
小型FK系列 FK05-FK08 (法蘭固定側) Support Unit FK		

建議軸端加工尺寸圖 P14~P16

支撐座固定端軸向負荷參考表 P17

鎖固螺帽型號參考表 P18

安裝程序 P21

